

**ACTION TAKEN REPORT
IN THE MATTER**

Shahu Shivaji Mokashi

Vs.

State of Maharashtra

(As per order dated 18th April, 2022 of Hon'ble National Green Tribunal (NGT), Principal Bench,
New Delhi in Original Application No. 180/2022 Shahu Shivaji Mokashi

vs.

State of Maharashtra)

Prepared By:

MAHARASHTRA POLLUTION CONTROL BOARD

For submission to

**HON'BLE NATIONAL GREEN TRIBUNAL, PRINCIPAL
BENCH, NEW DELHI**

1.0 Introduction

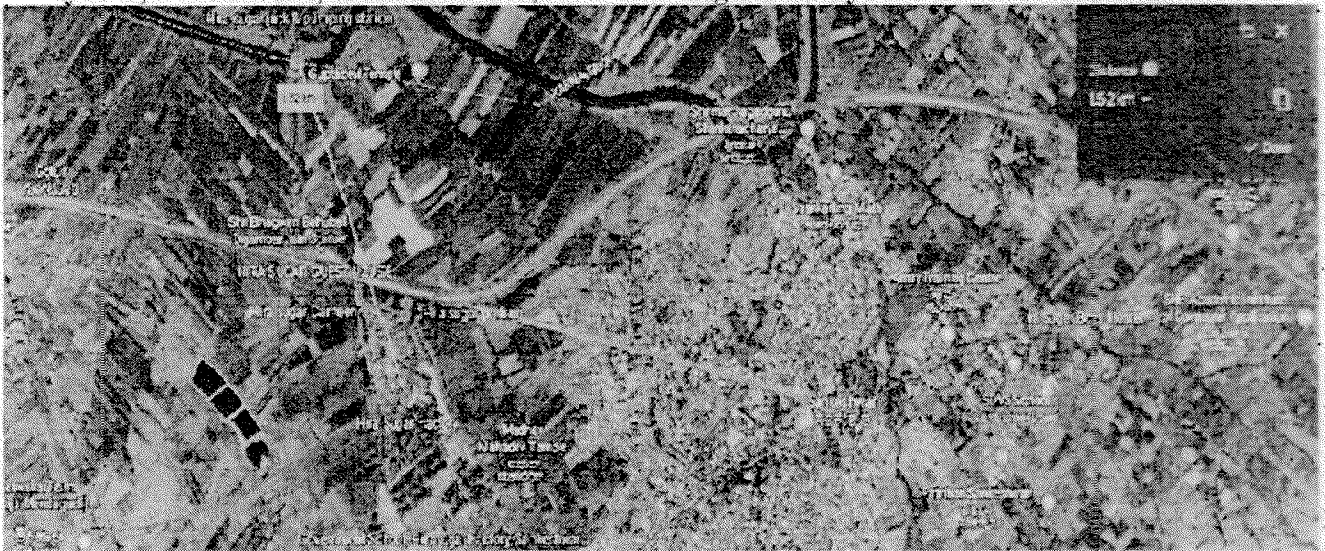
The matter in OA 180 of 2022 between Shahu Shivaji Mokashi vs. State of Maharashtra is related with the pollution caused by the industry presently known as M/s. Hiranyakeshi Sahakari Sakkare Karkhane In this matter, Hon'ble National Green Tribunal (NGT) passed its order dated 18.04.2022 on the grievances raised by petitioner of Shri Shahu Shivaji Mokashi with the following directions:

- The grievances in the said letter of petition sent by Shri Shahu Shivaji Mokashi resident of Post Nangnur, Tal. Gadhinglaj, Dist. Kolhapur are that Shri Hiranyakeshi Sahakari Sakkare Karkhane, Sankerswar, Tal. Hukkeri, Dist. Belagavi is discharging its molasses in the waters of Hiranyakeshi River thereby polluting the river and groundwater causing great loss and posing serious health hazards to the inhabitants, the cattle and others dependent on river water for agriculture and other purpose.
- Accordingly, Hon'ble NGT constitute a Joint Committee comprising of representatives of State PCB, Department of Agriculture and Fisheries, Government of Maharashtra and District Magistrate, Belagavi. The State PCB is the Nodal agency for coordination and compliance. The Joint Committee may meet within four weeks and undertake site visit and look into the grievance of the applicant. Factual and action taken report may be furnished within two months.
- Accordingly Maharashtra Pollution Control Board constitute a committee vide letter dtd. 20.05.2022 comprised of –
 - District Collector Belagavi (Member),
 - Regional Officer of MPCB- Kolhapur (Member Convenor)
 - Representative of Fisheries
Government of Maharashtra (Member)
 - Representative of Agriculture
Government of Maharashtra (Member)

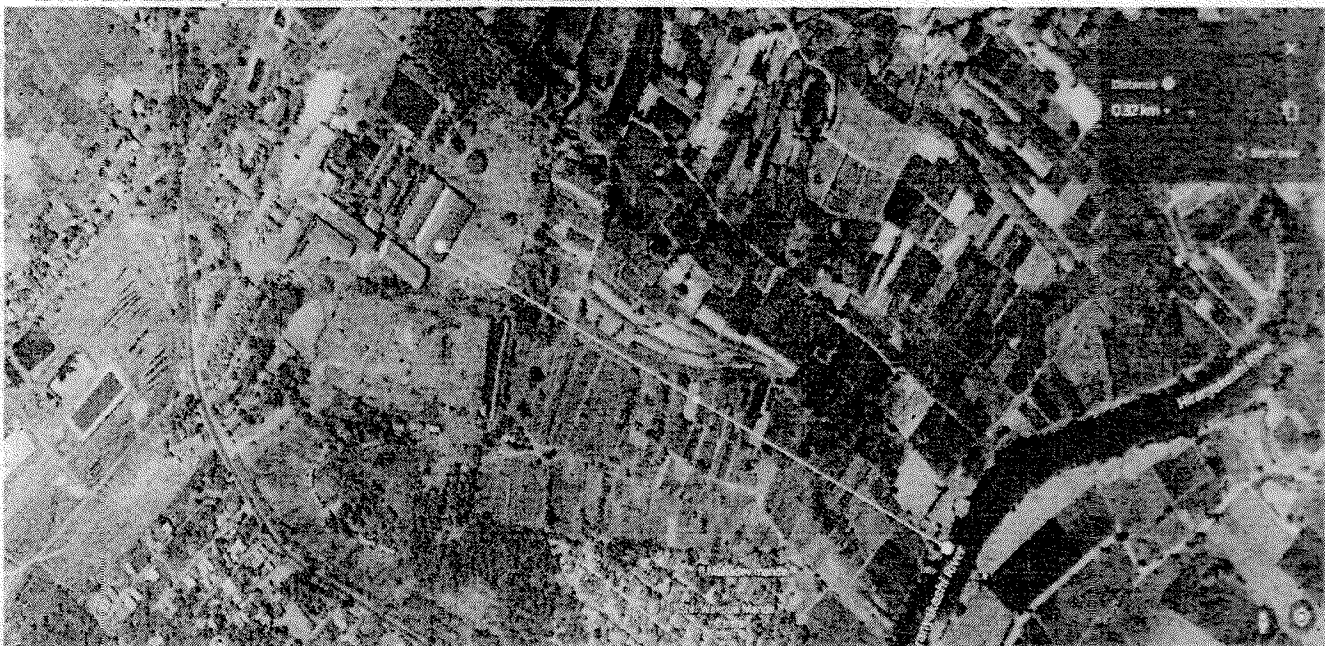
Based on the O.A No. 180 of 2022 filed by Shri Shahu Shivaji Mokashi resident of Nangnur Village, Gadhinglaj Taluk, Kolhapur District before the Honorable NATIONAL GREEN TRIBUNAL, PRINCIPAL BENCH, a committee was formed by Maharashtra Pollution Control Board vide letter No. MPCB/JD (WPC)/B-220520-FTS-0112, dated: 20-05-2022.

The committee meeting was held on 31-05-2022 at Deputy Commissioner office, Belagavi and decided to carry out the inspection on 06-06-2022.

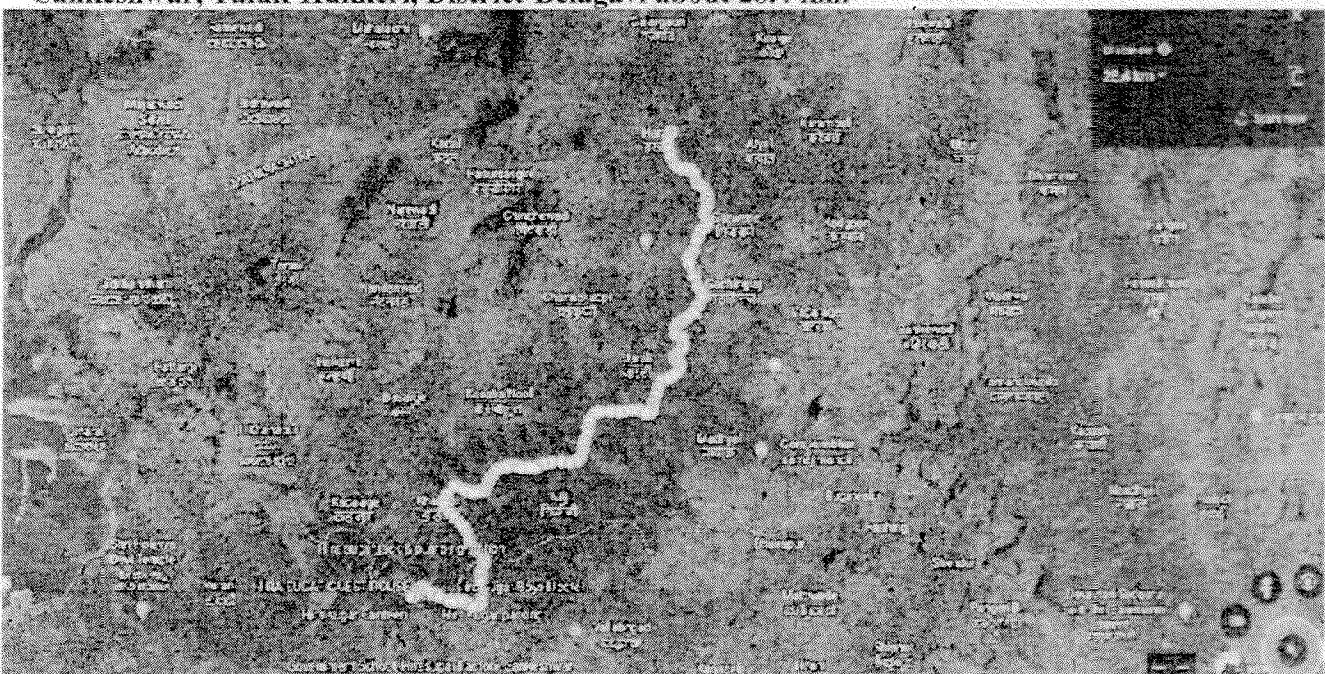
Google map showing distance between M/s. Hiranyakeshi Shakari Sakkare Karkhane, Niyamit, Sankeshwar, Taluk-Hukkeri, District-Belagavi Hiranyakeshi River about 1.52 km.



Google map showing distance between M/s. Appasaheb Nalwade Gadhinglaj Taluka SSK Ltd. To Hiranyakeshi River about 0.82 km.



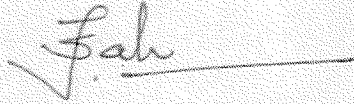
Google map showing distance between M/s. Appasaheb Nalwade Gadhinglaj Taluka SSK Ltd. to Naganur barrage near M/s. Hiranyakeshi Shakari Sakkare Karkhane, Niyamit, Sankeshwar, Taluk-Hukkeri, District-Belagavi about 28.4 km.



Accordingly constituted committee along with Regional Officer, KSPCB has visited on 06.06.2022 and inspection report enclosed as **Annexure - I**.

The reports of District Superintendent, Agricultural Officer, Kolhapur and Assistant Commissioner of Fisheries, Technical Officer, Kolhapur were enclosed as **Annexure-II & Annexure-III** respectively.

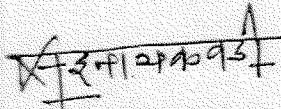
It is opined that the above mentioned industries needs to be inspected during the forth coming crushing season.



Sri. J S Salunkhe, Regional Officer,
Maharashtra Pollution Control Board,
Kolhapur (Member Convener).



Sri. Nitesh K Patil IAS,
Deputy Commissioner,
Belagavi District (Member).



Mr. Salim Ismail Naikwadi,
Assistant Commissioner of Fisheries
(Technical), Kolhapur, Government of
Maharashtra (Member).



Sri. Dagadu Shamrao Shinge,
Technical Officer, District Superintendent
Agricultural Officer, Kolhapur (Member).

Inspection Report of Joint Committee formed by Hon'ble National Green Tribunal vide order dated: 18-04-2022 in O.A No. 180 of 2022

1.	Joint Committee members present during the inspection.	<ol style="list-style-type: none"> 1. Sri. Nitesh K Patil IAS, Deputy Commissioner, Belagavi District (Member). 2. Sri. J S Salunkhe, Regional Officer, Maharashtra Pollution Control Board, Kolhapur (Member Convener). 3. Mr. Salim Ismail Naikwadi, Assistant Commissioner of Fisheries (Technical), Kolhapur, Government of Maharashtra (Member). 4. Sri. Dagadu Shamrao Shinge, Technical Officer, District Superintendent Agricultural Officer, Kolhapur (Member).
2.	Date of inspection.	06-06-2022
3.	Reference	<ol style="list-style-type: none"> 1. OA No. 180 of 2022 filed by Shahu Shivaji Mokshi Vs State of Maharashtra and others before Hon'ble NGT 2. Hon'ble National Green Tribunal order dated: 18-04-2022 in O.A No. 180 of 2022. 3. Maharashtra Pollution Control Board letter No. MPCB/JD(WPC)/B-220520-FTS-0112, dated: 20-05-2022. 4. Meeting held with the committee members at Deputy Commissioner office, Belagavi on 31-05-2022.
4.	Persons Contacted	<p>Industry Representative</p> <ol style="list-style-type: none"> 1. Shri. A. R. Chate, Envi. Engineer, M/s. Hiranyakeshi Shakari Sakkare Karkhane, Niyamit, Sankeshwar, Taluk-Hukkeri, District-Belagavi. 2. Shri. Prakash Bhamangol, Distillery Incharge, M/s. Appasaheb Nalawade Gadhinglaj Taluka Sahakari Sakhar Karkhana Ltd, Harali, Taluka-Gadhinglaj, District-Kolhapur 3. Shri Anand Chougule, Representative of Sugar Unit, M/s. Appasaheb Nalawade Gadhinglaj Taluka Sahakari Sakhar Karkhana Ltd, Harali, Taluka-Gadhinglaj, District-Kolhapur <p>Main complainant: Sri. Shahu Shivaji Mokashi Taluk-Gadhinglaj, Kollapur District</p>
5.	Officer accompanied from KSPCB & MPCB	<ol style="list-style-type: none"> 1. Sri. Jagadeesh I H, Regional Officer, KSPCB, Belagavi-2 (Chikkodi center). 2. Sri. Pramod Mane, Sub Regional Officer, Maharashtra Pollution Control Board, Kolhapur.

* * * * *

Preamble:

Based on the O.A No. 180 of 2022 filed by Shri Shahu Shivaji Mokashi resident of Nangnur Village, Gadhinglaj Taluka, Kolhapur District before the Hon'ble NATIONALGREEN TRIBUNAL, PRINCIPAL BENCH, a committee was formed by Maharashtra Pollution Control Board vide letter No. MPCB/JD(WPC)/B-220520-FTS-0112, dated: 20-05-2022.

The committee meeting was held on 31-05-2022 at Deputy Commissioner Office, Belagavi and decided to carry out the inspection on 06-06-2022.

Brief about Hiranyakeshi River:

The river begins in the Hiranyakeshwar temple, a holy shrine dedicated to the goddess Parvati near the hill-station of Amboli. It quickly flows in a north-west direction towards Jakatwadi, a small village next to Amboli. There the river turns right almost at a right angle and begins to flow eastwards similar to most rivers flowing on the Deccan Plateau. It takes a north-eastward course till it reaches the town of Ajra in the Kolhapur district of Maharashtra. The river then crosses

underneath a bridge for the second time. It continues its run now along the right side of SH 134 crossing over into the Belgaum district, Karnataka. At the town of Sankeshwar it begins its short south-eastward course before it confluences with Ghataprabha river after Hidkal dam and before Gokak falls. In parts of its course it forms part of the boundary between Karnataka and Maharashtra. The joint inspection was carried out on 06-06-2022 as per the direction of Hon'ble NGT order dated: 18.04.2022 in O.A No. 180 of 2022 and following places were inspected.

1. M/s. Hiranyakeshi Sahakari Sakkare Karkhane, Niyamit, Sankeshwar, Taluk-Hukkeri, District-Belagavi & adjacent area.
2. M/s Appasaheb Nalawade Gadhinglaj Taluka Sahakari Sakkar Karkhana Ltd, Harali, Taluka-Gadhinglaj, District-Kolhapur & adjacent areas.
3. Hiranyakeshi river stretch from Harali Village, Gadhinglaj Taluka, Kolhapur District, Maharashtra State to Naganur barrage, Hukkeri Taluka, Belagavi District, Karnataka State (Harali, Gadhinglaj, Jirali, Khandhal, Sankeshwar, Nanganur).

M/s. Hiranyakeshi SSK Niyamit, Sankeshwar, Hukkeri-Taluka, Belagavi District.

M/s. Hiranyakeshi SSK Niyamit is located upstream about 1.52 Km (approximately) away from Hiranyakeshi River, Naganur barrage.

M/s. Hiranyakeshi SSK Niyamit, is existing co-operative industry operating at Sankeshwar, Hukkeri-Taluk, Belagavi District since 1961-62. They have sugar manufacturing plant with Sugar Cane Crushing of capacity 8000 TCD, Co-Generation plant of Capacity 52 MW and Rectified Spirit/ Ethanol manufacturing unit of capacity 54 KLD. The combined consent issued from KSPCB was expired on 30-06-2021. The CFO application filed by the industry were forwarded to Head Office, KSPCB, Bangalore vide RO, KSPCB, Chikkodi inspection report No.1617 Dated: 09-12-2021 and CFO is yet to be issued.

During joint inspection, it was observed that Sugar, Co-gen and Distillery units were not under operation due to off season.

Following observations made during the inspection:

During the visit it is informed that present crushing season ended on 28-02-2022 & distillery production stopped on 01-06-2022.

1. Existing ETP consists following units.

Sl. No.	Unit
1	Bar Screen
2	Oil and Grease Trap
3	Equalization Tank
4	Monthly Wash Tank
5	Aeration Tank
6	Clarifier
7	Treated water sump (15 days storage tank)
8	Sludge drying beds

2. Based on the non-compliances observed the following actions were initiated from KSPCB.
 - a) Notice of Proposed Directions was issued on 24-01-2019 and Prohibitory order on 23-07-2019.
 - b) The personal hearings were conducted at Head Office, Bangalore on 15-04-2019, 11-06-2020 (Through video conference) and 22-02-2022.
3. Industry has obtained Consent for Expansion from the Head Office, KSPCB, Bangalore towards the upgradation of existing ETP and installation of new CPU vide letter No. CTE-326777, dated: 15-09-2021. The industry has submitted undertaking in stamp paper mentioning that the following ETP & CPU units will be established within 3 months
 - a) Up-gradation of existing ETP from 800 m³/day to 1100 m³/day.

- b) Installation of Condensate Polishing Unit (CPU) for sugar mill 2700 m³/day.
- c) Installation of CPU for Distillery unit 1000 m³/day.
4. Three existing lagoons were observed and the industry representative was informed to abandon the existing two lagoons. In reply the representative of the industry requested to retain the said lagoons for storm water management. The 6 Acres compost yard is provided for composting distillery effluent, press mud & boiler ash, etc.
5. The representative of the industry was informed to complete the up gradation of existing ETP and to install new CPU for sugar mill and distillery units before commissioning of the forthcoming crushing season.
6. During the inspection local villagers (Sou. Supriya Kamble, Sarpanch, Shri Vikas Mokashi, (Dyp. Sarpanch), Shri Ashok Shelake, Gramsevak, from village Nangnur informed that during the crushing season the effluent is being discharged into the drain leading to the nalla and finally it joins the Hiranyakeshi river.

M/s. Appasaheb Nalawade Gadhinglaj Taluka Sahakari Sakhar Karkhana Ltd., (Call with Brisk Facilities Ltd (Sugar Unit), Harali, Taluka-Gadhinglaj, District-Kollapur.

M/s. Appasaheb Nalawade Gadhinglaj Taluka Sahakari Sakhar Karkhana Ltd., call with Brisk Facilities Ltd, Harali, Tal. Gadhinglaj, Dist. Kolhapur, is existing industry operating since 1979. They have sugar manufacturing plant with Sugar Cane Crushing of capacity 2000 TCD. The consent issued from MPCB is valid up to 31-07-2023. During this crushing season the unit was operated only for 55 days. Total crushing of the unit was 69237 MT.

Following observations made during the inspection:

During the visit it is informed that present crushing season is ended on 18th February 2022.

1. Existing ETP consists of following units.

Sl. No.	Unit
1	Bar Screen
2	Oil and Grease Trap
3	Equalization Tank
4	Aeration Tank
5	Clarifier 1
6	Clarifier 2
7	Treated water sump (15 days storage tank)
8	Sludge drying beds
9	Emergency Holding Tank

2. The physical observation shows that effluent treatment plant equipments are not in working condition. They were informed to remove the bypass line provided for effluent.
3. The trade effluent was also stored in the unlined lagoon near the ETP and this may also join nala leading to Hiranyakeshi river during the rainy season.
4. The unlined lagoons (two numbers) were provided as 15 days' storage tank and filled with trade effluent mixed with rain water & informed to abandon the same.
5. No proper agriculture management plan was observed for utilization of treated trade effluent and hence the treated trade effluent joins surface drain leading to nala and Hiranyakeshi river.
6. Based on non-compliances observed in the past, MPCB has issued Proposed Directions on 29-12-2017.

During joint inspection it was observed that Sugar unit was not under operation due to off season.

M/s. Appasaheb Nalawade Gadhinglaj Taluka Sahakari Sakhar Karkhana Ltd., call with Brisk Facilities Ltd (Distillery Unit), Harali, Taluka-Gadhinglaj, District-Kollapur.

M/s. Appasaheb Nalawade Gadhinglaj Taluka Sahakari Sakhar Karkhana Ltd., call with Brisk Facilities Ltd. (Distillery Unit), Harali, Tal. Gadhinglaj, Dist. Kolhapur, is existing industry operating since 1987. They have obtained consent for distillery 25 KLPD manufacturing industrial alcohol 720 MT/M. The consent issued from MPCB is valid up to 31-08-2024. During the season distillery was operated for 14 days and total was 346751 ltrs.

1. Based on the non-compliances observed the following actions were recently initiated from MPCB.
 - a) Proposed Direction on dated. 29-12-2017.
 - b) Proposed Directions on dated. 07-07-2021.

M/s. Appasaheb Nalawade Gadhinglaj Taluka SSK Ltd., is located at a distance of 0.82 Km (approximately) from Hiranyakeshi River and from 28.4 Km (approximately) away from Naganur Barrage.

During joint inspection it was observed that Distillery unit was not under operation due to off season.

Following observations made during the inspection:

1. Three existing lagoons were observed and the industry representative was informed to abandon the existing two lagoons near the compost yard of distillery. The industry authorities have stored trade waste in unlined lagoon near the compost yard of distillery and overflow may join nala leading to Hiranyakeshi river during the rainy season.
2. Sri. Siddaram Bhima Dhanagari resident of Harali village informed that during the crushing season the effluent is being discharged into the drain leading to the nala and finally it joins the Hiranyakeshi river.
3. Industry has provided Re-Boiler & Multiple Effect Evaporator for the distillery unit. The concentrated spent wash used for surface composting.

During the inspection following river water/trade effluent samples were collected on 06-06-2022 and submitted to Board Laboratory, Belagavi for the purpose of analysis and the copy of the analysis reports enclosed vide **Exhibit-I**.

Details of sample collected on 06-06-2022

Sl No.	Location	GPS Co-ordinates		Nature of sampling
		Latitude	Longitude	
01	Sankeshwar (M/s Hiranyakeshi SSK Niyamit, Sankeshwar, Hukkeri-Taluk, Belagavi – District	16.243158	74.505935	Open well water sample collected from the agriculture land adjacent spent wash storage lagoon No. 02.
02	Nala near UP Dhaba, Sankeshwar Road, Sankeshwar	16.246635	74.495220	Waste water collected from nala adjacent to UP Dhaba, Sankeshwar Road, Sankeshwar.
03	Hiranyakeshi River, Harali village, Gadhinglaj Taluk, Kolhapur District, Maharashtra State.	16.175970	74.338064	Hiranyakeshi river water sample collected at Harali Village bridge, Harali village, Gadhinglaj Taluk, Kolhapur District, Maharashtra State.
04	Hiranyakeshi River, Harali village, Gadhinglaj Taluk, Kolhapur District, Maharashtra State.	16.176066	74.337753	Hiranyakeshi river water sample collected at Harali Village bridge (Center of the river), Harali village, Gadhinglaj Taluk, Kolhapur District, Maharashtra State
05	M/s Appasaheb Nalawade SSK, Harali village, Gadhinglaj Taluk, Kolhapur District, Maharashtra State	16.166032	74.345619	Trade waste collected near culvert adjacent to compost yard of the industry.
06	M/s Appasaheb Nalawade SSK, Harali village, Gadhinglaj Taluk, Kolhapur District, Maharashtra State	16.164478	74.340401	Trade waste collected from unlined pit behind ETP within industrial premises.

07	Hiranyakeshi River, Gadinglaj, Gadinglaj Taluk, Kolhapur District, Maharashtra State	16.208722	74.353656	Hiranyakeshi river water sample collected at Gadinglkaj bridge, near Gadinglaj, Gadinglaj Taluk, Kolhapur District, Maharashtra State.
08	Hiranyakeshi River, Jarali Village, Gadinglaj Taluk, Kolhapur District, Maharashtra State	16.233566	74.387023	Hiranyakeshi river water sample (Stangated water) collected at Jarali Village barrage, Jarali Village, Gadinglaj Taluk, Kolhapur District, Maharashtra State.
09	Hiranyakeshi River, Gotur Village, Hukkeri Taluk, Belagavi District, Karnataka State	16.234147	74.496393	Hiranyakeshi river water sample (Stangated water) collected at Naganur barrage.
10	Nala near water intake point of Hiranyakeshi SSK.	16.235769	74.494658	Nala water sample collected from nala joining to Hiranyakeshi river near water intake point of Hiranyakeshi SSK.
11	Hiranyakeshi River, Sankeshwar, Hukkeri Taluk, Belagavi District, Karnataka State.	16.235281	74.494292	Hiranyakeshi river water sample (Stangated water) collected at upstream of nala joining to Hiranyakeshi river near water intake point of Hiranyakeshi SSK.
12	Hiranyakeshi River, Sankeshwar, Hukkeri Taluk, Belagavi District, Karnataka State.	16.234681	74.496097	Hiranyakeshi river water sample (Stangated water) collected at downstream of nala joining to Hiranyakeshi river near water intake point of Hiranyakeshi SSK.
13	Hiranyakeshi River, Kanadal Village, Gadinglaj Taluk, Kolhapur District, Maharashtra State	16.220044	74.469739	Hiranyakeshi river water sample (Stangated water) collected at Kanadal Village barrage, Kanadal Village, Gadinglaj Taluk, Kolhapur District, Maharashtra State

The water quality of Hiranyakeshi River collected at different locations as mentioned below: From Harali Village, Gadhinglaj Taluk, Kollapur District, Maharashtra State to Gotur barrage (Naganur), Hukkeri Taluka, Belagavi District, Karnataka State (Harali, Gadhinglaj, Jirali, Khandhal, Sankeshwar, Naganur-6).

Sl. No.	Sampling point	DO mg/liter	BOD mg/liter
01	Hiranyakeshi River, Harali village, (Right bank)	7.9	2.94
02	Hiranyakeshi River, Harali village, (Center of the river)	Not Analysed	3.06
03	Hiranyakeshi River, Gadinglaj,	9.8	3.78
04	Hiranyakeshi River, Jarali village,	7.97	2.34
05	Hiranyakeshi River, Kanadal village,	9	5.17
06	Hiranyakeshi River, Gotur village, upstream of nala	7	3.96
07	Hiranyakeshi River, Gotur village, downstream of nala	7.3	4.26
08	Hiranyakeshi River, Naganur barrage	7.4	4.5



Sampling Location map

The photographs taken during the inspection are enclosed vide Exhibit-II.

It is opined that the above mentioned industries needs to be inspected during the forth coming crushing season.

Jah

Sri. J S Salunkhe, Regional Officer,
Maharashtra Pollution Control Board,
Kolhapur (Member Convener).

Pabink

Sri. Nitesh K Patil IAS,
Deputy Commissioner,
Belagavi District (Member).

वि. इ. ना. ना. ना. ना. ना.

Mr. Salim Ismail Naikwadi,
Assistant Commissioner of Fisheries
(Technical), Kolhapur, Government of
Maharashtra (Member).

श्री. दा. दा. दा. दा. दा.

Sri. Dagadu Shamrao Shinge,
Technical Officer, District Superintendent
Agricultural Officer, Kolhapur (Member).

An ISO 9001:2015 and ISO 45001:2018 Certified Laboratory

Regional Office : Belagavi-1
Karnataka State Pollution Control Board
81, Main Road, Auto Nagar,
Kambargi Industrial Area, Belagavi-590 015
Telefax : 0831-2459121

ಪ್ರಾದೇಶಿಕ ಕಛೇರಿ : ಬೆಲಗಾವಿ-೧
೧ ನೇ ಮುಖ್ಯ ರಸ್ತೆ, ಆಟೋ ನಗರ,
ಕಾಂಬರ್ಗಿ ಕೈಗಾರಿಕಾ ಪ್ರದೇಶ,
ಬೆಲಗಾವಿ-೫೯೦೦೧೫
ತೆಲೆಫಾಕ್ಸ್: ೦೮೩೧-೨೪೫೯೧೨೧



ANALYSIS REPORT : RIVER
Regional Laboratory, Belagavi

NO: PCB/BGV-1/LAB/AR/NWMP/2022-23/202 Date: 14/6/22
NAME OF THE STATION : Hiranyakeshi River (Maharashtra and Karnataka States).
SAMPLE COLLECTED BY : Joint Committee formed by NGT order Dtd: 18-04-2022.
DATE OF COLLECTION : 06-06-2022.
DATE OF RECEIPT : 07-06-2022.
PARTICULARS OF SAMPLE : 247-Hiranyakeshi River water sample collected at Harali village Bridge, Gadahingalaj Tq., Kolhapur District. Maharashtra State. 249-Hiranyakeshi River water sample collected at Harali village Bridge (Center of the River), Gadahingalaj Tq., Kolhapur District. Maharashtra State. 253-Hiranyakeshi River water sample collected at Gadahingalaj Bridge near Gadahingalaj, Gadahingalaj Tq., Kolhapur District. Maharashtra State. 255-Hiranyakeshi River water sample (Stagnated) collected at Jarali village, Barrage, Gadahingalaj Tq., Kolhapur District. Maharashtra State. 257-Hiranyakeshi River water sample (stagnated) water collected at D/s of Naganur Barrage, Hukkeri Tq., Belagavi District. Karnataka State. 260-Hiranyakeshi River water sample (stagnated) collected at U/s of Nalla joining to Hiranyakeshi River water near water intake point of Hiranyakeshi SSK., Sankeshwar, Hukkeri Tq., Belagavi District. Karnataka State. 262-Hiranyakeshi River water sample (stagnated) water collected at D/s of Nalla Joining to Hiranyakeshi River near water intake point of Hiranyakeshi SSK, Sankeshwar, Hukkeri Tq., Belagavi District. Karnataka State. 264-Hiranyakeshi River water sample (stagnated) water collected at D/s of Kanadal Barrage, Gadahingalaj Tq., Kolhapur District. Maharashtra State.

Sl No.	Sample No.s Parameters		247	249	253	255	257	260	262	264
	1	Temperature	°C							
2	Dissolved oxygen	mg/l	7.9	-	9.8	7.97	7.4	7.9	7.3	9
3	pH	-	8.18	8.22	8.46	8.42	8.21	8.15	8.16	8.56
4	Conductivity	uMhos/cm	260	268	256	268	384	446	380	324
5	BOD	mg/l	2.94	3.06	3.78	2.34	4.5	3.96	4.26	5.17
6	Nitrate as NO ₃	mg/l	14	8.27	8.27	6.79	6.93	5.99	7.33	7.06
7	Ammonia As N	mg/l	BDL	BDL	BDL	BDL	BDL	BDL	BDL	BDL
8	Total Coli	mpn/100ml	920	920	920	920	1600	1600	1600	>1600
9	Faecal Coli	mpn/100ml	350	350	430	350	920	920	920	920
10	Faecal Streptococci	mpn/100ml	94	70	110	140	280	540	540	540
11	Turbidity	ntu	14.5	11.3	16.4	15.1	18.1	16.4	12.7	16.4
12	Pheno Alkalinity	mg/l	Nil	Nil	20	16	Nil	Nil	Nil	28
13	Total Alkalinity	mg/l	96	84	124	96	168	156	144	140
14	Hardness as CaCO ₂	mg/l	68	68	92	100	168	156	156	112
15	Calcium as CaCO ₃	mg/l	36	40	28	52	92	96	84	76

PTO

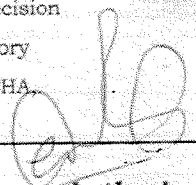
16	Calcium as Ca	mg/l	14	16	11	21	37	38	34	30
17	Magnesium as MgCO ₃	mg/l	32	28	64	48	76	60	72	36
18	Magnesium as Mg	mg/l	8	7	16	12	18	15	17	9
19	Chlorid as Cl	mg/l	36	36	32	36	48	56	56	48
20	Sulphate as SO ₄	mg/l	9	8	8	9	27	25	27	14
21	Sodium as Na	mg/l	5.7	6.5	7.14	8.4	12	14	15	11
22	Potassium as K	mg/l	1.62	1.92	2.33	2.39	2.2	2.25	2.41	2.7
23	Total Dissolved Solids	mg/l	160	160	160	160	240	280	240	200
24	Fixed Dissolved Solids	mg/l	40	40	40	40	40	80	80	80
25	Total Suspended Solids	mg/l	15	10	25	35	5	15	20	25
26	Phosphate as P	mg/l	0.054	0.049	0.073	0.063	0.074	0.079	0.068	0.072
27	Fluoride as F	mg/l	0.077	0.017	0.016	0.012	0.049	0.081	0.093	0.031
28	COD	mg/l	60	48	60	36	72	40	36	64
29	TKN as N	mg/l	BDL	BDL	BDL	BDL	BDL	BDL	BDL	BDL
30	Boron as B	mg/l	BDL	BDL	BDL	BDL	BDL	BDL	BDL	BDL
31	Nitrite as N	mg/l	0.212	0.19	0.339	0.303	0.347	0.449	0.414	76
32	Percent Sodium	-	15.06	16.63	13.89	14.84	12.83	15.73	16.79	16.97
33	Sodium Absorption Ratio	-	0.299	0.343	0.323	0.365	0.383	0.5	0.509	0.445

INFERENCE:

Note: 1. The above results pertain only to the sample tested. 2. The reports shall not be reproduced without the written approval of the laboratory. 3. Samples will be stored for a period of 20 days from the date of issue of report. 4. Decision Rule: "Statement of conformity applies only to analysis of results which meets the standards stipulated by regulatory authority". 5. Method of analysis is as per the Standard Method for the examination of Water and Waste water, APHA, AWWA, WPCF, USA and Indian Standards Publication. 6. BDL= Below Detection Limit.


Analysed By

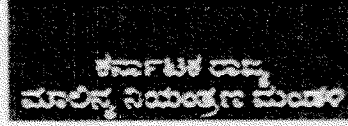
.....End of Report.....


Authorised
Signatory
Scientific Officer
Regional Laboratory
Karnataka State Pollution Control Board
Belgaum.

An ISO 9001:2015 and ISO 45001:2018 Certified Laboratory

Regional Office : Belagavi-1
Karnataka State Pollution Control Board
#1, Main Road, Auto Nagar,
Kanbargi Industrial Area, Belagavi-590 015
Telefax : 0831-2459121

ಪ್ರಾದೇಶಿಕ ಕಛೇರಿ : ಬೆಲಗಾವಿ-೧
ಕರ್ನಾಟಕ ರಾಜ್ಯದ ಮಾಲಿನ್ಯ ನಿಯಂತ್ರಣ ಮಂಡಳಿ
ಕರ್ನಾಟಕ ರಾಜ್ಯದ ಮಾಲಿನ್ಯ ನಿಯಂತ್ರಣ ಮಂಡಳಿ
ಬೆಲಗಾವಿ-೫೯೦೦೧೫
ತೆಲೆಫಾಕ್ಸ್ : ೦೮೩೧-೨೪೫೯೧೨೧



23

ANALYSIS REPORT : WASTE WATER
Regional Laboratory, Belagavi.

NO: PCB/BGV-1/LAB/AR/2022-23/203 Date: 16/6/22

NAME OF THE STATION : Waste water samples collected at Hiranyakeshi River Bank of Maharashtra and Karnataka States.

SAMPLE COLLECTED BY : Joint Committee formed by NGT order Dtd: 18-04-2022.

DATE OF COLLECTION : 06-06-2022.

RECEIVED DATE : 07-06-2022.

PARTICULARS OF SAMPLE : 246-Waste water sample collected from nala adjacent to UP Dhaba, Sankeshwar, Hukkeri Tq., Belagavi Distirct, Karnataka. 251-Trade waste collected near culvert adjacent to compost yard of M/s. Appasaheb Nalawade Sugars. Ltd., Harali village, Gadhingalaj Tq., Kolhapur District, Maharashtra. 252-Trade waste collected from unlined pit behind ETP within Industry premises of M/s. Appasaheb M/s. Nalawade Sugars. Ltd., Harali village, Gadhingalaj Tq., Kolhapur District, Maharashtra. 259-Nala water collected from nala joining to U/S of Jackwell of M/s. Hiranyakeshi SSK ni., Sankeshwar, Hukkeri Tq., Belagavi District, Karnataka.

Sl No.	PARAMETERS	UNITS	Standards	246	251	252	259
1	pH	-	6.0-9.0	7.85	7.82	7.43	7.83
2	BOD	mg/l	100	4.26	3525	788	4.95
3	Suspended Solids	mg/l	100	20	2000	30	25
4	Dissolved Solids	mg/l	2100	680	9280	1760	880
5	Conductivity	umhos/cm	2250	1070	14310	2740	1383
6	Chloride as Cl	mg/l	600	132	2000	420	260
7	Sulphate as SO4	mg/l	1000	84	164	66	22
8	Sodium Absorption Ratio	meq/l	17	0.585	0.29	1.391	0.623
9	Residual Sodium Carbonate	-	5	Nil	46	20	Nil
10	Oil and Grease	mg/l	10	Nil	Nil	Nil	Nil

Inference	Particulars and Standards mentioned are as per requisition letter Report Status:
<p>Note 1. The above results pertain only to the sample tested. 2. The report shall not be reproduced without the written approval of the laboratory. 3. Samples will be stored for a period of 10 days from the date of issue of report. 4. The method of analysis is as per the Standard Method for the examination of Water and Waste water and Indian Standard Publication. 3. ND= Not Detexted. 4. BDL= Below Detection Limit.</p>	

Analysed By

Authorised Signatory
(Laboratory Head)
Scientific Officer

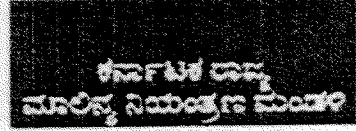
Regional Laboratory
Karnataka State Pollution Control Board
Belgaum.

An ISO 9001:2015 and ISO 45001:2018 Certified Laboratory

EXHIBIT

Regional Office - Belagavi-1
Karnataka State Pollution Control Board
#1, Main Road, Auto Nagar,
Kambargi Industrial Area, Belagavi-590 015
Telefax : 0831-2459121

ಪ್ರಾದೇಶಿಕ ಕಛೇರಿ : ಬೆಲಗಾವಿ-೧
೧ ನೇ ಮುಖ್ಯ ರಸ್ತೆ, ಆಟೋ ನಗರ,
ಕಾಂಬರ್ಗಿ ಕೈಗಾರಿಕಾ ಪ್ರದೇಶ,
ಬೆಲಗಾವಿ-೫೯೦೦೧೫
ಮೊಬೈಲ್:೦೮೩೧-೨೪೫೯೧೨೧



24

ANALYSIS REPORT : WATER
Regional Laboratory, Belagavi.

NO: PCB/BGV-1/LAB/AR/2022-23/ 204 Date: 16/6/22
NAME OF THE STATION : Open well water sample collected from Sri. Hiremeth Agri Filed, Gotur, Sankeshwar, Hukkeri Tq., Belagavi, Karnataka State.
SAMPLE COLLECTED BY : Joint Committee formed by NGT order Dtd: 18-04-2022.
DATE OF COLLECTION : 06-06-2022.
RECEIVED DATE : 07-06-2022.
PARTICULARS OF SAMPLE : 245-G/s of O/w sample collected at Sri Hiremath Agri land LAND adjacent to spent wash storage lagoon no.2 of M/s. Hiranyakeshi SSK Ni., Sankeshwar, Hukkeri Tq., Belagavi District, Karnataka.

Sl No.	PARAMETERS	UNITS	Std Limit IS 10500:2012		245
			*AL	**PL	
1	pH	-	6.5-8.5	NR	8.14
2	BOD	mg/l	-	-	8.25
3	Dissolved Solids	mg/l	500	2000	2000
4	Conductivity	uMhos/cm	-	-	3180
5	Chlorid as Cl	mg/l	250	1000	680
6	Sulphate as SO ₄	mg/l	200	400	504
7	Hardness	mg/l	200	600	1320
8	Calcium as Ca	mg/l	75	200	248
9	Magnesium as Mg	mg/l	30	100	170
10	Nitrate as NO ₃	mg/l	45	NR	14
11	Iron as Fe	mg/l	0.3	NR	0.063
12	Fluoride as F	mg/l	1	1.5	0.079
13	Chromium as Cr	mg/l	0.05	NR	BDL
14	Alkalinity	mg/l	200	600	600
15	Turbidity	ntu	1	5	11

Inference: Conforms/Non Conforms to AL and PL of IS 10500:2012 Standard with respect to above tested parameters.

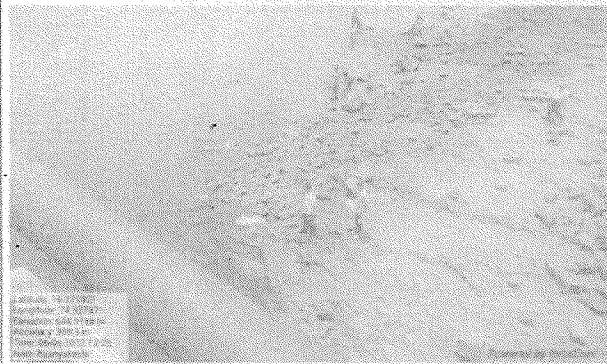
Note: 1. The above results pertains only to the sample tested. 2.AL=Acceptable Limit, PL=Permissible Limit (in the absence of alternate source). 3.The report shall be reproduced without the written approval of the laboratory. 4. Samples will be stored for a period of 10 days from the date of issue of report. 5. Standards are compared with IS 10500 Drinking Water Standards 6. The method of analysis is as per the Standard Method for the examination of Water and Waste water, APHA, AWWA, WPCF, USA and Indian Standards Publication. 7. ND= Not Detected, BDL= Below Detection Limit, 8. Desirable Limits, *PL= **Permissible Limits (in the absence of alternate source). NR= Not Relaxable.

[Signature]
Analysed By

[Signature]
Authorised Signatory
(Laboratory Head)
Scientific Officer
Regional Laboratory
Karnataka State Pollution Control Board
Belgaum.

Exhibit - II

Photographs of Hiranyakeshi River (06-06-2022)



Hiranyakeshi River, Harali Village



Hiranyakeshi River, Harali Village



Hiranyakeshi River, Gadinglaj



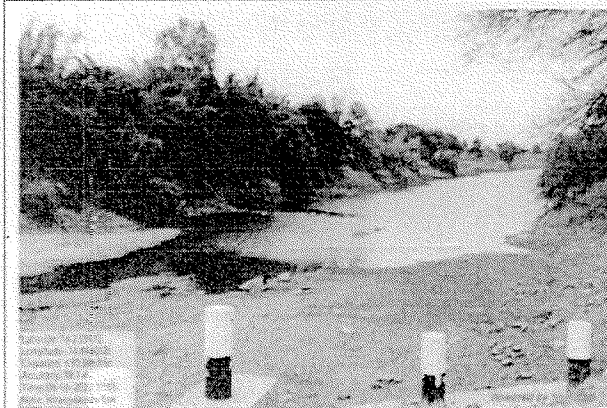
Hiranyakeshi River, Gadinglaj



Hiranyakeshi River, Jarali Village



Hiranyakeshi River, Kanadal Village

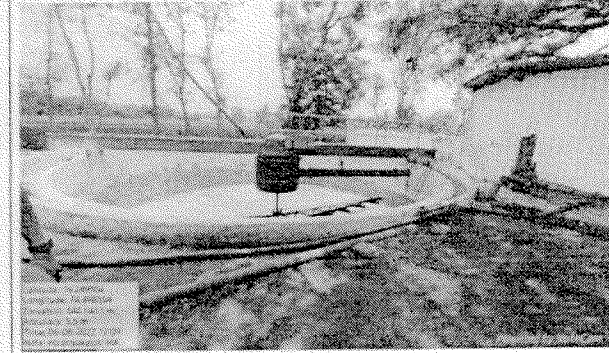
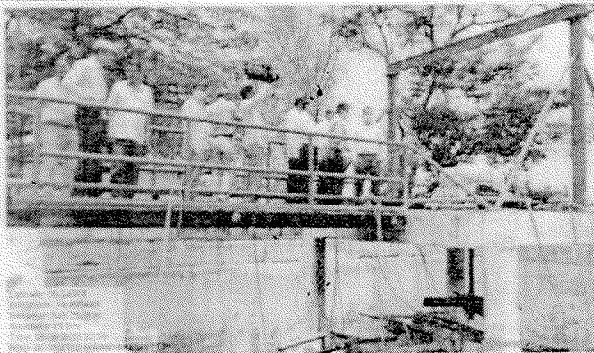
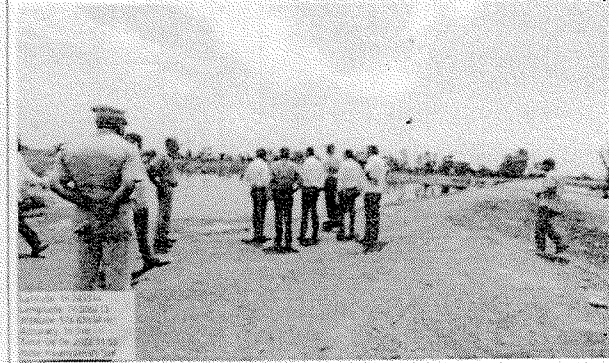
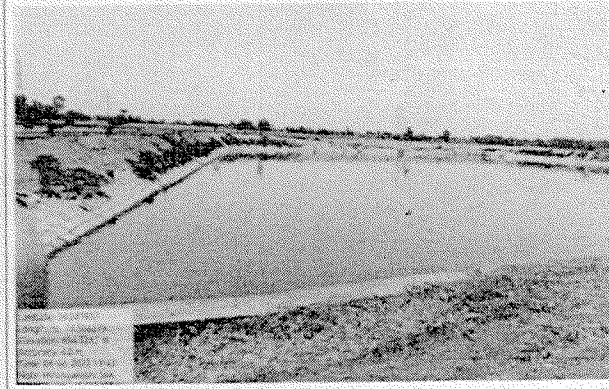


Hiranyakeshi River, Naganur Barrage

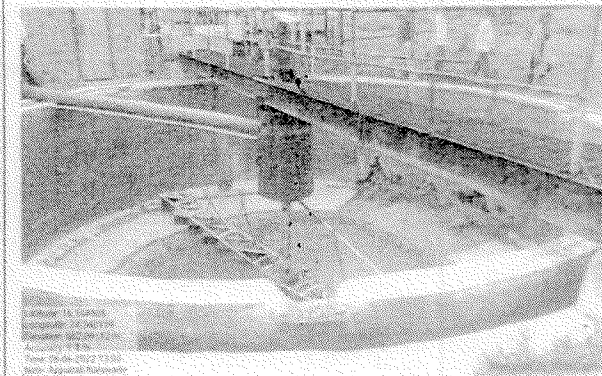
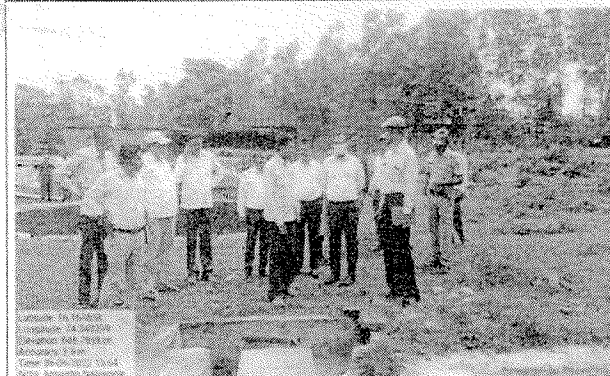
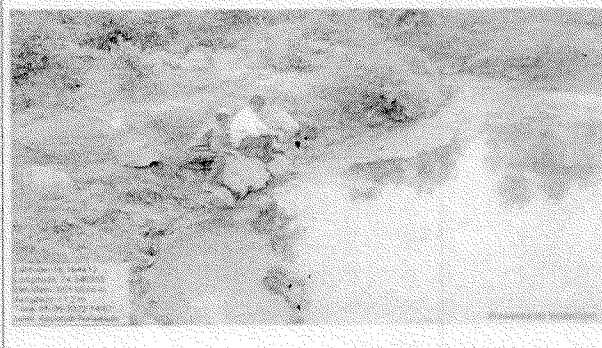
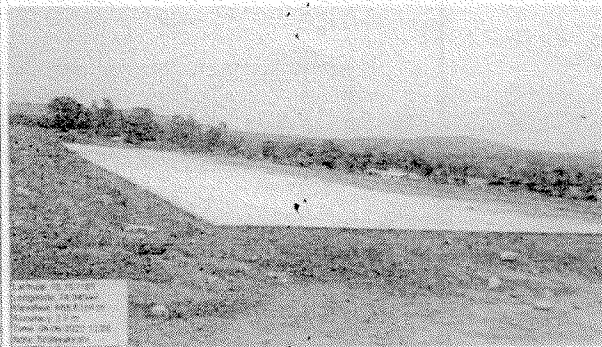
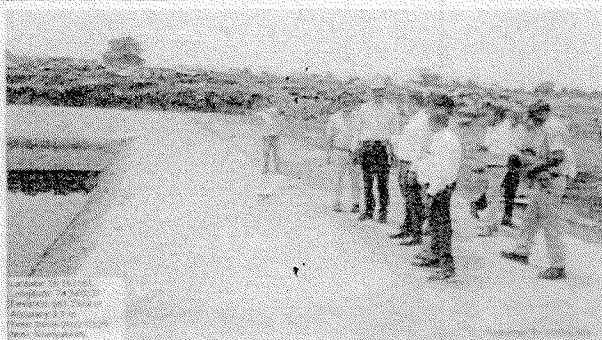


Hiranyakeshi River, upstream of Naganur Barrage

Photographs of Hiranyakeshi SSK, Niyamit, Sankeshwar, Taluk-Hukkeri, District-Belagavi



Photographs of M/s Appasaheb Nalawade Gadhinglaj Taluka Sahakari Sakkar Karkhana Ltd, Harali, Taluka-Gadhinglaj, District-Kolhapur



Annex - II

District Superintending Agriculture Officer, Kolhapur

Office, Date - 21/06/2022

28

To,
The Regional Officer,
Maharashtra Pollution Control Board,
Kolhapur

Sub. :- Compliance as per order dated 18th April, 2022 of Hon'ble National Green Tribunal (NGT), Principal Bench, New Delhi in Original Application No. 180/2022 Shahu Shivaji Mokashi vs. State of Maharashtra & others

Ref. :- 1. Your office letter No. Outward No. 220602-FTS 0053 dtd. 02/06/2022.

Sir,

With reference to above following information is submitted


1. Water sample collected from village Terani, Dundage, Manwad, Channekuppi Tal. Gadhinglaj, Dist. Kolhapur in 2017-18 are enclosed herewith.

- a) The water quality of village Terani (Lab Sample No. 2728W201700181001) & village Dundage (Lab Sample No. 2728W2017001402001) is suitable for agriculture with proper precaution.
- b) The water quality of village Manwad (Lab Sample No. 2728W201700366001) & village Channekuppi (Lab Sample No. 2728W2017001349001) is moderate for use of agriculture.

2. The Agriculture Department is collecting soil sample of various villages of Taluka Gadhinglaj are also enclosed herewith. According to analysis report the concentration of NPK is as below

a) Nitrogen concentration	-	Less
b) Phosphors	-	Moderate
c) Potassium	-	Moderate
d) Organic Carbon	-	Moderate to Maximum
e) pH	-	Moderately acidic & alkaline
f) Alkalinity	-	Normal

Detailed report enclosed in Marathi separately. Off this report there is no complaints in this office.


Technical Officer
District Superintending Agriculture Officer, Kolhapur

FTS - 0213		
14	06	2022

जाक्र/तंत्र/प्र.मं./शा.शि.मो./ 8083 /2022
जिल्हा अधिक्षक कृषि अधिकारी, कार्यालय
कोल्हापूर. दिनांक - १३/०६/२०२२

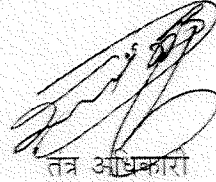
प्रति,
प्रादेशिक अधिकारी,
महाराष्ट्र प्रदुषण नियंत्रण मंडळ, कोल्हापूर

विषय - श्री. शाहु शिवाजी मोकाशी यांनी महाराष्ट्र राज्य आणि इतर यांच्या विरुद्ध दाखल केलेल्या मुळ अर्ज क्र.१८०/२०२२ मध्ये मा.राष्ट्रीय हरित लँवाद, पश्चिम विभाग, पुणे यांनी तथ्यात्मक तपासणी आणि कार्यवाही करणेबाबत दि. १८/०४/२०२२ रोजी दिलेल्या आदेशाचे पालन करणेबाबत..

संदर्भ - आपले कार्यालयाचे पत्र क्र जाक्र.२२०६०२ - ००५२ दिनांक ०२/०६/२०२२

उपरोक्त संदर्भिय विषयान्वये गडहिंग्लज तालुक्यामध्ये माती व पाणी नमुने तपासलेली माहिती सन २०१७-१८ ते २०२१-२२ पर्यंतची माहिती आपले पुढील कार्यवाहीसाठी सादर

१. सन २०१७-१८ मध्ये पाणी नमुने संख्या -०४ तपासणी केलेली आहे. सदर अहवाल सोबत सादर.
२. सन २०१८-१९ - गडहिंग्लज तालुक्यातून पाणी नमुने अप्राप्त.
३. सन २०१९-२० - गडहिंग्लज तालुक्यातून पाणी नमुने अप्राप्त.
४. सन २०२०-२१ - गडहिंग्लज तालुक्यातून पाणी नमुने अप्राप्त.
५. सन २०२१-२२ - गडहिंग्लज तालुक्यातून पाणी नमुने अप्राप्त.



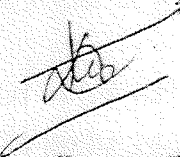
तंत्र अधिकारी
जिल्हा अधिक्षक कृषि अधिकारी
कोल्हापूर

520(x)

146m

तालुका गडहिंगलज

क्र.सं.	शेतकऱ्याचे नाव	गाव	तालुका	जिल्हा	प्रयोगशाळा नमूना क्र.
1	बापुसा रावसा देसाई	तेरणी	गडहिंगलज	कोल्हापुर	2728W201700181001
2	प्रकाश शिवराडा देसाई	दुडगे	गडहिंगलज	कोल्हापुर	2728W201700402001
3	अन्यास आपन्ना कलमोटा	मानवड	गडहिंगलज	कोल्हापुर	2728W201700366001
4	गणपती बापू शेतार	घान्नेकुप्पी	गडहिंगलज	कोल्हापुर	2728W201700349001



 जिल्हा मृद सर्वेक्षण व मृद चाचणी अधिकारी
 मृद सर्वेक्षण व मृद चाचणी प्रयोगशाळा
 कोल्हापुर.

सन 2017-18 मधील पाणी तपासणीचे अहवाल

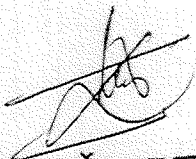
क्रमांक	प्रयोगशाळा नमूना क्रमांक	सामु	क्षारता	सोडिअम	पातळी	मॅग्नेशियम		कॅल्शियम		कार्बोनेट		वायुकार्बोनेट		क्लोराईड्स							
						सुरवातीचे	शेवटचे	सुरवातीचे	शेवटचे	सुरवातीचे	शेवटचे	सुरवातीचे	शेवटचे	सुरवातीचे	शेवटचे			सुरवातीचे	शेवटचे	सुरवातीचे	शेवटचे
189	2728W20170018100	6.00	0.79	85.00	0.00	4.68	5.52	31.19	32.10	0.50	0.60	6.50	7.60	0.30	4.00	4.80	2.00	1.27	3.82	0.38	C3S1
411	2728W20170040200	7.50	1.60	60.00	0.40	1.12	2.02	7.00	7.92	0.10	0.20	1.50	2.40	0.30	1.20	2.00	2.00	0.62	2.68	0.00	C3S1
377	2728W20170036600	6.90	0.69	12.00	0.10	8.00	8.07	21.20	22.10	1.00	1.10	9.90	11.00	0.30	8.90	11.00	7.20	0.00	0.54	0.40	C2S1
360	2728W20170034900	7.50	0.29	56.00	0.00	1.15	2.27	6.20	7.15	0.10	0.20	1.60	2.40	0.30	1.00	2.10	3.20	0.00	2.27	0.00	C2S1

class info

C3S1	काळजीपूर्वक वापर करावा
C2S1	सिचनार्थ मध्यम प्रतिये पाणी
C4S1	सिचनार्थ अयोग्य पाणी
C1S1	सिचनार्थ उत्तम प्रतिये पाणी



 जिल्हा मूद सर्वेक्षण व मूद वाचणी अधिकारी
 मूद सर्वेक्षण व मूद वाचणी कार्यालय, स्वयंसेवा केंद्र
 मूद सर्वेक्षण व मूद वाचणी प्रयोगशाळा
 कोल्हापूर

कोल्हापर	मंडळ	Hebbal Kasaba Nool	0.48%	परिसा	0.98%	परिसा	1.48%	परिसा	0.00%	परिसा	22.08%	परिसा	15.69%	परिसा
कोल्हापर	मंडळ	Helewadi	0.00%	परिसा	0.00%	परिसा	0.00%	परिसा	0.00%	परिसा	0.00%	परिसा	0.00%	परिसा
कोल्हापर	मंडळ	Hidwadi	59.02%	कमतरता	0.00%	परिसा	0.00%	परिसा	0.00%	परिसा	27.87%	परिसा	79.77%	कमतरता
कोल्हापर	मंडळ	Hirige	0.00%	परिसा	34.69%	परिसा	0.00%	परिसा	0.00%	परिसा	5.10%	परिसा	64.29%	कमतरता
कोल्हापर	मंडळ	Hitti	15.15%	परिसा	1.01%	परिसा	1.01%	परिसा	0.00%	परिसा	45.96%	कमतरता	25.76%	परिसा
कोल्हापर	मंडळ	Hingnal	0.00%	परिसा	0.00%	परिसा	0.00%	परिसा	0.00%	परिसा	5.36%	परिसा	1.79%	परिसा
कोल्हापर	मंडळ	Idarguchhi	39.53%	परिसा	72.09%	कमतरता	6.98%	परिसा	0.00%	परिसा	6.98%	परिसा	18.60%	परिसा
कोल्हापर	मंडळ	Inchanal	0.00%	परिसा	5.00%	परिसा	0.00%	परिसा	0.00%	परिसा	2.00%	परिसा	14.00%	परिसा
कोल्हापर	मंडळ	Jakhewadi	0.00%	परिसा	8.33%	परिसा	0.00%	परिसा	0.00%	परिसा	4.17%	परिसा	8.33%	परिसा
कोल्हापर	मंडळ	Jambhivadi	0.00%	परिसा	3.29%	परिसा	0.00%	परिसा	0.00%	परिसा	83.87%	कमतरता	32.26%	परिसा
कोल्हापर	मंडळ	Jaral	0.00%	परिसा	18.44%	परिसा	0.00%	परिसा	0.00%	परिसा	7.09%	परिसा	19.15%	परिसा
कोल्हापर	मंडळ	Kadal	89.29%	कमतरता	3.57%	परिसा	0.00%	परिसा	0.00%	परिसा	78.57%	कमतरता	67.86%	कमतरता
कोल्हापर	मंडळ	Kadalg	7.23%	परिसा	86.75%	कमतरता	0.00%	परिसा	0.00%	परिसा	8.43%	परिसा	9.64%	परिसा
कोल्हापर	मंडळ	Kadgaon	1.36%	परिसा	42.86%	कमतरता	0.00%	परिसा	0.00%	परिसा	12.93%	परिसा	26.53%	परिसा
कोल्हापर	मंडळ	Kalanwadi	0.00%	परिसा	13.16%	परिसा	2.63%	परिसा	0.00%	परिसा	0.00%	परिसा	7.89%	परिसा
कोल्हापर	मंडळ	Kalevi Katti	67.69%	कमतरता	4.62%	परिसा	0.00%	परिसा	0.00%	परिसा	12.31%	परिसा	31.34%	परिसा
कोल्हापर	मंडळ	Kandewadi	0.00%	परिसा	4.26%	परिसा	0.00%	परिसा	0.00%	परिसा	68.09%	कमतरता	74.47%	कमतरता
कोल्हापर	मंडळ	Karamballi	6.60%	परिसा	18.10%	परिसा	0.00%	परिसा	0.00%	परिसा	43.40%	कमतरता	0.94%	परिसा
कोल्हापर	मंडळ	Kasaba Nool	0.89%	परिसा	43.30%	कमतरता	0.00%	परिसा	0.00%	परिसा	32.14%	परिसा	6.25%	परिसा
कोल्हापर	मंडळ	Kaulge	0.00%	परिसा	25.88%	परिसा	0.00%	परिसा	0.00%	परिसा	27.06%	परिसा	0.00%	परिसा
कोल्हापर	मंडळ	Khamale Hatti	3.70%	परिसा	62.96%	कमतरता	0.00%	परिसा	0.00%	परिसा	7.41%	परिसा	0.00%	परिसा
कोल्हापर	मंडळ	Khandal	0.00%	परिसा	0.00%	परिसा	0.00%	परिसा	0.00%	परिसा	0.00%	परिसा	30.19%	परिसा
कोल्हापर	मंडळ	Kumari	78.79%	कमतरता	0.00%	परिसा	0.00%	परिसा	0.00%	परिसा	7.58%	परिसा	33.33%	परिसा
कोल्हापर	मंडळ	Kumbhal	58.54%	कमतरता	0.00%	परिसा	0.00%	परिसा	0.00%	परिसा	19.51%	परिसा	41.46%	कमतरता
कोल्हापर	मंडळ	Lingnoor K. Nool	1.79%	परिसा	21.43%	परिसा	0.00%	परिसा	0.00%	परिसा	5.36%	परिसा	3.57%	परिसा
कोल्हापर	मंडळ	Lingnoor K. Nesari	0.00%	परिसा	35.42%	परिसा	0.00%	परिसा	0.00%	परिसा	0.00%	परिसा	2.08%	परिसा
कोल्हापर	मंडळ	Madayi	0.00%	परिसा	34.85%	परिसा	0.00%	परिसा	0.00%	परिसा	42.42%	कमतरता	21.21%	परिसा
कोल्हापर	मंडळ	Managaon	72.28%	कमतरता	0.00%	परिसा	0.00%	परिसा	0.00%	परिसा	35.33%	परिसा	47.28%	कमतरता
कोल्हापर	मंडळ	Maladewadi	0.00%	परिसा	0.00%	परिसा	0.00%	परिसा	0.00%	परिसा	56.25%	कमतरता	62.50%	कमतरता
कोल्हापर	मंडळ	Manwad	75.00%	कमतरता	0.00%	परिसा	0.00%	परिसा	0.00%	परिसा	0.00%	परिसा	56.82%	कमतरता
कोल्हापर	मंडळ	Masewadi	52.94%	कमतरता	2.94%	परिसा	0.00%	परिसा	0.00%	परिसा	26.47%	परिसा	0.00%	परिसा
कोल्हापर	मंडळ	Mugali	0.85%	परिसा	2.56%	परिसा	0.00%	परिसा	0.00%	परिसा	21.37%	परिसा	22.22%	परिसा
कोल्हापर	मंडळ	Mungurwadi	75.00%	कमतरता	0.00%	परिसा	0.00%	परिसा	0.00%	परिसा	29.17%	परिसा	0.00%	परिसा
कोल्हापर	मंडळ	Mutnal	0.00%	परिसा	30.95%	परिसा	0.00%	परिसा	0.00%	परिसा	55.95%	कमतरता	84.52%	कमतरता
कोल्हापर	मंडळ	Narijanwad	90.12%	कमतरता	12.35%	परिसा	0.00%	परिसा	0.00%	परिसा	53.09%	कमतरता	50.62%	कमतरता
कोल्हापर	मंडळ	Nangnur	0.00%	परिसा	87.50%	कमतरता	0.00%	परिसा	0.00%	परिसा	19.44%	परिसा	4.17%	परिसा
कोल्हापर	मंडळ	Narewadi	0.00%	परिसा	30.00%	परिसा	0.00%	परिसा	0.00%	परिसा	10.00%	परिसा	8.57%	परिसा



 जिल्हा मृद सर्वेक्षण व मृद चाचणी अधिकारी
 मृद सर्वेक्षण व मृद चाचणी प्रयोगशाळा
 कोल्हापर.

गाडीहिंगलज	Naukud	3.70%	परिष्ठा	27.78%	परिष्ठा	0.00%	परिष्ठा	0.00%	परिष्ठा	46.30%	कमतरता	20.37%	परिष्ठा
गाडीहिंगलज	Nesari	85.51%	कमतरता	0.00%	परिष्ठा	0.00%	परिष्ठा	0.00%	परिष्ठा	46.97%	कमतरता	37.88%	परिष्ठा
गाडीहिंगलज	Niji	5.43%	परिष्ठा	0.00%	परिष्ठा	0.00%	परिष्ठा	0.00%	परिष्ठा	1.09%	परिष्ठा	38.04%	परिष्ठा
गाडीहिंगलज	Sambare	13.70%	परिष्ठा	0.00%	परिष्ठा	0.00%	परिष्ठा	0.00%	परिष्ठा	64.38%	कमतरता	78.08%	कमतरता
गाडीहिंगलज	Saroli	9.89%	परिष्ठा	8.79%	परिष्ठा	0.00%	परिष्ठा	0.00%	परिष्ठा	87.91%	कमतरता	8.79%	परिष्ठा
गाडीहिंगलज	Sawantwadi	2.27%	परिष्ठा	15.91%	परिष्ठा	0.00%	परिष्ठा	0.00%	परिष्ठा	2.27%	परिष्ठा	49.18%	कमतरता
गाडीहिंगलज	Shendri	0.00%	परिष्ठा	2.30%	परिष्ठा	0.00%	परिष्ठा	0.00%	परिष्ठा	54.02%	कमतरता	31.03%	परिष्ठा
गाडीहिंगलज	Shindewadi	0.00%	परिष्ठा	4.35%	परिष्ठा	0.00%	परिष्ठा	0.00%	परिष्ठा	54.02%	कमतरता	31.03%	परिष्ठा
गाडीहिंगलज	Shipur Tarf Ajara	6.45%	परिष्ठा	19.35%	परिष्ठा	0.00%	परिष्ठा	0.00%	परिष्ठा	4.35%	परिष्ठा	0.00%	परिष्ठा
गाडीहिंगलज	Shipur Tarf Nesari	0.00%	परिष्ठा	2.56%	परिष्ठा	0.00%	परिष्ठा	0.00%	परिष्ठा	0.00%	परिष्ठा	16.13%	परिष्ठा
गाडीहिंगलज	Talewadi	88.24%	कमतरता	0.00%	परिष्ठा	0.00%	परिष्ठा	0.00%	परिष्ठा	0.00%	परिष्ठा	53.85%	कमतरता
गाडीहिंगलज	Tanawadi	5.00%	परिष्ठा	5.00%	परिष्ठा	0.00%	परिष्ठा	0.00%	परिष्ठा	17.65%	परिष्ठा	5.88%	परिष्ठा
गाडीहिंगलज	Tarewadi	85.22%	कमतरता	2.17%	परिष्ठा	2.17%	परिष्ठा	0.00%	परिष्ठा	5.00%	परिष्ठा	25.00%	परिष्ठा
गाडीहिंगलज	Tavarewadi	0.00%	परिष्ठा	0.00%	परिष्ठा	0.00%	परिष्ठा	0.00%	परिष्ठा	56.52%	कमतरता	4.35%	परिष्ठा
गाडीहिंगलज	Teginhal	77.78%	कमतरता	7.41%	परिष्ठा	0.00%	परिष्ठा	0.00%	परिष्ठा	29.41%	परिष्ठा	79.41%	कमतरता
गाडीहिंगलज	Terani	91.86%	कमतरता	0.00%	परिष्ठा	0.00%	परिष्ठा	0.00%	परिष्ठा	37.04%	परिष्ठा	7.41%	परिष्ठा
गाडीहिंगलज	Tikkewadi	16.67%	परिष्ठा	25.00%	परिष्ठा	0.00%	परिष्ठा	0.00%	परिष्ठा	17.44%	परिष्ठा	25.58%	परिष्ठा
गाडीहिंगलज	Tupurwadi	5.56%	परिष्ठा	33.33%	परिष्ठा	0.00%	परिष्ठा	0.00%	परिष्ठा	66.67%	कमतरता	33.33%	परिष्ठा
गाडीहिंगलज	Umbarwadi	98.97%	कमतरता	1.03%	परिष्ठा	0.00%	परिष्ठा	0.00%	परिष्ठा	27.78%	परिष्ठा	5.56%	परिष्ठा
गाडीहिंगलज	Waghrali	0.00%	परिष्ठा	2.08%	परिष्ठा	0.00%	परिष्ठा	0.00%	परिष्ठा	31.96%	परिष्ठा	12.37%	परिष्ठा
गाडीहिंगलज	Wairagwadi	57.89%	कमतरता	10.53%	परिष्ठा	0.00%	परिष्ठा	0.00%	परिष्ठा	0.00%	परिष्ठा	4.17%	परिष्ठा
गाडीहिंगलज	Yamehatti	56.25%	कमतरता	0.00%	परिष्ठा	0.00%	परिष्ठा	0.00%	परिष्ठा	42.11%	कमतरता	73.68%	कमतरता
गाडीहिंगलज	Yenechavandi	0.00%	परिष्ठा	4.08%	परिष्ठा	0.00%	परिष्ठा	0.00%	परिष्ठा	57.50%	परिष्ठा	15.67%	परिष्ठा
गाडीहिंगलज	Mangur Tarf Sawantwadi	54.55%	कमतरता	0.00%	परिष्ठा	0.00%	परिष्ठा	0.00%	परिष्ठा	6.12%	परिष्ठा	67.35%	कमतरता
कमतरता (Deficient) - Above 40 % , परिष्ठा (Sufficient) - 0%													

Those villages which are covered under Urbanization, industrialization, Damp Project, Forest, Municipal Corporation etc. are not covered in the above data.


 जिल्हा मृद सर्वेक्षण व मृद चाचणी अधिकारी
 मृद सर्वेक्षण व मृद चाचणी प्रयोगशाळा
 कोल्हापूर.

कोल्हापूर / गवहिनज																
जमीन शारीर्य पत्रिका कार्यक्रम (2री सायकल अधारित)																
सामान्य जमीन वनीकृत निर्देश																
जिल्हा	तहसील	Census Code	गाव	सुपीकता निर्देशक अंश					सुपीकता निर्देशक पातळी							
				मृग	सुपीक	पातळ	सुरक्षित कार्बन	सुरक्षित कार्बन Range	सम	क्षरता	मृग	स्फुरक	पातळ	सुरक्षित कार्बन	सम	
कोल्हापूर	गवहिनज	275304293567976	Ainapur	0.51	1.59	1.89	2.23	0.41-0.60%	6.1-6.5	<1	अल्पत कमी	अल्पत भरपर	मध्यम	मध्यम	Slightly Acidic	Normal
कोल्हापूर	गवहिनज	275304293567991	Araigandri	0.91	1.64	1.47	2.07	0.41-0.60%	5.6-6.0	<1	कमी	मध्यम	मध्यम	मध्यम	Moderately Alkaline	Normal
कोल्हापूर	गवहिनज	275304293568090	Acipowadi	1.01	1.15	1.84	2.71	0.41-0.60%	7.4-8.4	<1	कमी	मध्यम	मध्यम	मध्यम	Moderately Alkaline	Normal
कोल्हापूर	गवहिनज	275304293567973	Ayal	0.9	2.29	1.89	2.15	0.41-0.60%	7.4-8.4	<1	कमी	भारी	मध्यम	मध्यम	Moderately Alkaline	Normal
कोल्हापूर	गवहिनज	275304293568006	Aurnal	1.02	1.25	1.63	2.34	0.61-1%	7.4-8.4	<1	कमी	कमी	मध्यम	मध्यम	Moderately Alkaline	Normal
कोल्हापूर	गवहिनज	275304293568006	Basarge Kh	1.04	1.99	1.41	1.43	0.41-0.60%	7.4-8.4	<1	कमी	मध्यम	मध्यम	मध्यम	Moderately Alkaline	Normal
कोल्हापूर	गवहिनज	275304293568006	Basarge Kh	1.07	1.18	1.45	1.83	0.41-0.60%	7.4-8.4	<1	कमी	मध्यम	मध्यम	मध्यम	Moderately Alkaline	Normal
कोल्हापूर	गवहिनज	275304293568006	Beknar	5	0.53	0.59	2.29	0.61-1%	6.1-6.5	<1	कमी	कमी	मध्यम	मध्यम	Moderately Alkaline	Normal
कोल्हापूर	गवहिनज	275304293567987	Beknar	1.04	1.48	1.75	2.35	0.61-1%	6.1-6.5	<1	कमी	अल्पत कमी	अल्पत कमी	भारपर	Slightly Acidic	Normal
कोल्हापूर	गवहिनज	275304293567974	Bekund	0.95	1.59	2.17	1.68	0.61-1%	7.4-8.4	<1	कमी	मध्यम	मध्यम	भारपर	Moderately Alkaline	Normal
कोल्हापूर	गवहिनज	275304293568018	Bodgaon	0.97	0.87	1.34	1.69	0.41-0.60%	7.4-8.4	<1	कमी	भारी	मध्यम	मध्यम	Moderately Alkaline	Normal
कोल्हापूर	गवहिनज	275304293568018	Budewadi	1.05	2.38	2.36	2.46	0.61-1%	7.4-8.4	<1	कमी	भारी	मध्यम	मध्यम	Moderately Alkaline	Normal
कोल्हापूर	गवहिनज	275304293568018	Bugadi Katti	1.01	1.23	1.05	2.95	>1%	5.6-6.0	<1	कमी	मध्यम	कमी	अल्पत भरपर	Moderately Acidic	Normal
कोल्हापूर	गवहिनज	275304293568018	Chandankud	1.01	0.69	1.49	1.78	0.41-0.60%	5.6-6.0	<1	कमी	अल्पत कमी	मध्यम	मध्यम	Moderately Acidic	Normal
कोल्हापूर	गवहिनज	275304293568018	Chanekumpi	0.94	0.97	1.35	1.81	0.41-0.60%	7.4-8.4	<1	कमी	अल्पत कमी	मध्यम	मध्यम	Moderately Acidic	Normal
कोल्हापूर	गवहिनज	275304293568007	Chinchevadi	0.97	1.11	1.46	4.18	0.61-1%	7.4-8.4	<1	कमी	कमी	मध्यम	भारी	Moderately Alkaline	Normal
कोल्हापूर	गवहिनज	275304293568045	Dunewadi	0.97	2.46	1.88	2.03	0.41-0.60%	7.4-8.4	<1	कमी	कमी	मध्यम	भारी	Moderately Alkaline	Normal
कोल्हापूर	गवहिनज	275304293568028	Dugunwadi	0.93	1.54	1.54	2.15	0.41-0.60%	5.6-6.0	<1	कमी	मध्यम	मध्यम	मध्यम	Moderately Alkaline	Normal
कोल्हापूर	गवहिनज	275304293567984	Dandage	1.07	2.44	1.92	1.91	0.41-0.60%	5.6-6.0	<1	कमी	भारी	मध्यम	मध्यम	Moderately Acidic	Normal
कोल्हापूर	गवहिनज	275304293567986	Garhingi	1.08	1.67	1.5	2.46	0.61-1%	7.4-8.4	<1	कमी	मध्यम	मध्यम	भारी	Moderately Alkaline	Normal
कोल्हापूर	गवहिनज	275304293567986	Siwani	3	2.53	2.11	2.32	0.61-1%	6.1-6.5	<1	कमी	भारी	मध्यम	भारी	Slightly Acidic	Normal
कोल्हापूर	गवहिनज	275304293568044	Gudakop	0.83	1.36	1.41	2.17	0.41-0.60%	7.4-8.4	<1	कमी	मध्यम	मध्यम	मध्यम	Moderately Alkaline	Normal
कोल्हापूर	गवहिनज	275304293568003	Hadige	0.82	1.97	1.44	2.15	0.41-0.60%	5.6-6.0	<1	कमी	मध्यम	मध्यम	मध्यम	Moderately Alkaline	Normal
कोल्हापूर	गवहिनज	275304293568003	Hakarni	1.01	1.16	1.5	2.46	0.61-1%	5.6-6.0	<1	कमी	कमी	मध्यम	भारी	Moderately Acidic	Normal
कोल्हापूर	गवहिनज	275304293567990	Hanmarnadi	1.03	1.22	1.33	2.09	0.41-0.60%	7.4-8.4	<1	कमी	कमी	मध्यम	मध्यम	Moderately Alkaline	Normal
कोल्हापूर	गवहिनज	275304293568006	Hanmantwadi	0.9	1.12	2.04	2.4	0.61-1%	7.4-8.4	<1	कमी	मध्यम	मध्यम	मध्यम	Moderately Alkaline	Normal
कोल्हापूर	गवहिनज	275304293568020	Hari Kh	0.96	0.82	1.1	2.34	0.61-1%	7.4-8.4	<1	कमी	मध्यम	मध्यम	भारी	Moderately Alkaline	Normal
कोल्हापूर	गवहिनज	275304293568020	Hari Kh	1.45	0.82	1.19	2.32	0.61-1%	7.4-8.4	<1	मध्यम	कमी	कमी	भारी	Moderately Alkaline	Normal
कोल्हापूर	गवहिनज	275304293567981	Haseshampu	1.15	3	2.67	2.75	0.61-1%	5.6-6.0	<1	मध्यम	कमी	कमी	भारी	Moderately Alkaline	Normal
कोल्हापूर	गवहिनज	275304293568024	Haturwadi	1	1.25	0.61	2.7	0.41-0.60%	5.6-6.0	<1	कमी	अल्पत भरपर	भारी	भारी	Moderately Acidic	Normal
कोल्हापूर	गवहिनज	275304293568024	Haturwadi	1.09	1.92	1.76	2.71	0.61-1%	7.4-8.4	<1	कमी	कमी	अल्पत कमी	मध्यम	Moderately Alkaline	Normal
कोल्हापूर	गवहिनज	275304293567986	Hedbal Jaldyal	0.99	1.81	1.89	2.59	0.61-1%	7.4-8.4	<1	कमी	मध्यम	मध्यम	भारी	Moderately Alkaline	Normal
कोल्हापूर	गवहिनज	275304293567986	Hedbal Kraba Moud	0.82	1.63	1.45	2.07	0.41-0.60%	7.4-8.4	<1	कमी	मध्यम	मध्यम	मध्यम	Moderately Alkaline	Normal
कोल्हापूर	गवहिनज	275304293568028	Hidewadi	1.25	2.14	2.18	2.04	0.41-0.60%	5.6-6.0	<1	कमी	मध्यम	मध्यम	मध्यम	Moderately Alkaline	Normal
कोल्हापूर	गवहिनज	275304293568028	Hidewadi	1	1.21	0.77	2.45	0.61-1%	7.4-8.4	<1	कमी	कमी	कमी	भारी	Moderately Acidic	Normal
कोल्हापूर	गवहिनज	275304293567979	Hilage	0.51	2.09	1.93	2.66	0.61-1%	5.6-6.0	<1	अल्पत कमी	मध्यम	मध्यम	भारी	Moderately Alkaline	Normal
कोल्हापूर	गवहिनज	275304293567989	Hirni	0.86	1.33	1.18	2.17	0.41-0.60%	6.1-6.5	<1	कमी	मध्यम	कमी	मध्यम	Moderately Acidic	Normal
कोल्हापूर	गवहिनज	275304293568001	Hunginjai	0.5	0.67	1.5	2.58	0.61-1%	6.1-6.5	<1	अल्पत कमी	अल्पत कमी	मध्यम	भारी	Slightly Acidic	Normal
कोल्हापूर	गवहिनज	275304293568001	Hunginjai	0.74	1.19	1.37	1.92	0.41-0.60%	6.1-6.5	<1	अल्पत कमी	अल्पत कमी	मध्यम	भारी	Slightly Acidic	Normal
कोल्हापूर	गवहिनज	275304293567975	Inchanal	0.56	2.92	2.4	2.51	0.61-1%	6.1-6.5	<1	अल्पत कमी	अल्पत कमी	मध्यम	मध्यम	Slightly Acidic	Normal
कोल्हापूर	गवहिनज	275304293567968	Jakhewadi	0.92	2.27	2	2.42	0.61-1%	7.4-8.4	<1	कमी	भारी	मध्यम	भारी	Slightly Acidic	Normal
कोल्हापूर	गवहिनज	275304293568010	Jambhriwadi	1.05	1.95	1.34	2.19	0.41-0.60%	5.6-6.0	<1	कमी	मध्यम	मध्यम	मध्यम	Moderately Alkaline	Normal


 जिल्हा मृद सर्वेक्षण व मृद चाचणी अधिकार
 मृद सर्वेक्षण व मृद चाचणी प्रयोगशाळा
 कोल्हापूर

क्र.सं.	संस्थान	पिनकोड	जिल्हा	N	P	K	OC	EC	PH	अपेक्षा	अपेक्षा	अपेक्षा	अपेक्षा	अपेक्षा	अपेक्षा	अपेक्षा	अपेक्षा	
1	Yashwantrao Chavan	422004	Yashwantrao Chavan	1.08	1.78	0.63	2.87	0.61-1%	7.4-8.1	< 1	कमी	कमी	अपेक्षा	अपेक्षा	अपेक्षा	अपेक्षा	Moderately Alkaline	Normal
2	Yashwantrao Chavan	422004	Yashwantrao Chavan	1.11	1.90	1.0	2.72	0.61-1%	5.6-6.0	< 1	कमी	अपेक्षा	अपेक्षा	अपेक्षा	अपेक्षा	अपेक्षा	Moderately Acidic	Normal
3	Yashwantrao Chavan	422004	Yashwantrao Chavan	1.01	0.97	1.87	1.82	0.41-0.60%	7.4-8.4	< 1	कमी	अपेक्षा	अपेक्षा	अपेक्षा	अपेक्षा	अपेक्षा	Moderately Alkaline	Normal
4	Mangal Yashwantrao Chavan	422004	Mangal Yashwantrao Chavan	1	0.53	0.98	2.29	0.61-1%	6.1-6.5	< 1	कमी	अपेक्षा	अपेक्षा	अपेक्षा	अपेक्षा	अपेक्षा	Slightly Acidic	Normal
5	Mangal Yashwantrao Chavan	422004	Mangal Yashwantrao Chavan	1	1.55	1.92	2.23	0.41-0.60%	7.4-8.4	< 1	कमी	अपेक्षा	अपेक्षा	अपेक्षा	अपेक्षा	अपेक्षा	Moderately Alkaline	Normal

For N, P, K, OC - अपेक्षा कमी (0.3 to 0.75), कमी (0.76 to 1.25), मध्यम (1.26 to 2.25), अपेक्षा (2.26 to 3.75), अपेक्षा अपेक्षा (2.75 to above)

For EC - Normal (0.4) Critical for germination (0.7), Critical for growth (1.1 sensitive crop (2-3), Severe injury to crop (>3)

For pH - Acid Sulphate (5.0), Slightly acidic (4.5-5.9), Strongly acidic (3.1-3.5), Moderately Acidic (3.6-6.0), Slightly Acidic (6.1-6.3), Neutral (6.3-7.3), Moderately Alkaline (7.4-8.4), Strongly Alkaline (> 8.5)

जिल्हा मृद सर्वेक्षण व मृद चाचणी अधिकारी
 मृद सर्वेक्षण व मृद चाचणी प्रयोगशाळा
 कोल्हापर.

जमीन आरोग्य पत्रिका कार्यक्रम (2री सायकल आधारित)														
गावनिहाय सूक्ष्म मूलद्रव्य कमतरता स्थिती														
तालुका	गाव	जस्त		लोह		तांबे		मंगल		बोरॉन		सल्फर		
		%	Level	%	Level	%	Level	%	Level	%	Level	%	Level	
कोल्हापूर	गडहिंगलज	Ainapur	0.00%	पूरेसा	19.57%	पूरेसा	0.00%	पूरेसा	0.00%	पूरेसा	0.00%	पूरेसा	15.22%	पूरेसा
कोल्हापूर	गडहिंगलज	Aralgundi	1.54%	पूरेसा	84.62%	कमतरता	0.00%	पूरेसा	0.00%	पूरेसा	18.46%	पूरेसा	26.15%	पूरेसा
कोल्हापूर	गडहिंगलज	Arjunwadi	41.18%	कमतरता	0.00%	पूरेसा	0.00%	पूरेसा	0.00%	पूरेसा	18.46%	पूरेसा	26.15%	पूरेसा
कोल्हापूर	गडहिंगलज	Atyal	1.14%	पूरेसा	30.23%	पूरेसा	0.00%	पूरेसा	0.00%	पूरेसा	57.35%	कमतरता	22.06%	पूरेसा
कोल्हापूर	गडहिंगलज	Aurnal	0.00%	पूरेसा	50.00%	कमतरता	0.00%	पूरेसा	0.00%	पूरेसा	1.14%	पूरेसा	9.09%	पूरेसा
कोल्हापूर	गडहिंगलज	Basarge Kh	15.79%	पूरेसा	2.63%	पूरेसा	0.00%	पूरेसा	0.00%	पूरेसा	28.57%	पूरेसा	55.36%	कमतरता
कोल्हापूर	गडहिंगलज	Basarge Bk	37.74%	पूरेसा	50.00%	कमतरता	0.00%	पूरेसा	0.00%	पूरेसा	0.00%	पूरेसा	21.05%	पूरेसा
कोल्हापूर	गडहिंगलज	Batkanangale	54.55%	कमतरता	0.00%	पूरेसा	0.00%	पूरेसा	0.00%	पूरेसा	12.26%	पूरेसा	25.47%	पूरेसा
कोल्हापूर	गडहिंगलज	Beknal	0.00%	पूरेसा	0.00%	पूरेसा	0.00%	पूरेसा	0.00%	पूरेसा	19.48%	पूरेसा	25.97%	पूरेसा
कोल्हापूर	गडहिंगलज	Beigundi	0.00%	पूरेसा	6.15%	पूरेसा	1.54%	पूरेसा	0.00%	पूरेसा	40.00%	पूरेसा	40.00%	पूरेसा
कोल्हापूर	गडहिंगलज	Bhadgson	0.00%	पूरेसा	0.00%	पूरेसा	0.00%	पूरेसा	0.00%	पूरेसा	1.54%	पूरेसा	40.00%	पूरेसा
कोल्हापूर	गडहिंगलज	Bidrewadi	1.35%	पूरेसा	12.16%	पूरेसा	0.00%	पूरेसा	0.00%	पूरेसा	28.91%	पूरेसा	50.78%	कमतरता
कोल्हापूर	गडहिंगलज	Bugadi Katti	88.64%	कमतरता	0.00%	पूरेसा	0.00%	पूरेसा	0.00%	पूरेसा	2.70%	पूरेसा	1.35%	पूरेसा
कोल्हापूर	गडहिंगलज	Chandankud	67.65%	कमतरता	0.00%	पूरेसा	0.00%	पूरेसा	0.00%	पूरेसा	31.82%	पूरेसा	70.45%	कमतरता
कोल्हापूर	गडहिंगलज	Channekuopi	0.00%	पूरेसा	0.00%	पूरेसा	0.00%	पूरेसा	0.00%	पूरेसा	55.88%	कमतरता	5.88%	पूरेसा
कोल्हापूर	गडहिंगलज	Chinchewadi	0.00%	पूरेसा	0.00%	पूरेसा	1.27%	पूरेसा	0.00%	पूरेसा	35.44%	पूरेसा	5.08%	पूरेसा
कोल्हापूर	गडहिंगलज	Donewadi	0.00%	पूरेसा	2.63%	पूरेसा	2.63%	पूरेसा	0.00%	पूरेसा	86.67%	कमतरता	20.00%	पूरेसा
कोल्हापूर	गडहिंगलज	Dugunwadi	14.81%	पूरेसा	0.00%	पूरेसा	0.00%	पूरेसा	0.00%	पूरेसा	0.00%	पूरेसा	0.00%	पूरेसा
कोल्हापूर	गडहिंगलज	Dundage	0.00%	पूरेसा	25.93%	पूरेसा	0.00%	पूरेसा	3.70%	पूरेसा	14.81%	पूरेसा	37.04%	पूरेसा
कोल्हापूर	गडहिंगलज	Gadhinglaj	16.91%	पूरेसा	40.07%	कमतरता	0.00%	पूरेसा	0.00%	पूरेसा	0.00%	पूरेसा	10.17%	पूरेसा
कोल्हापूर	गडहिंगलज	Gijavane	1.68%	पूरेसा	0.00%	पूरेसा	0.00%	पूरेसा	0.00%	पूरेसा	44.49%	कमतरता	41.81%	कमतरता
कोल्हापूर	गडहिंगलज	Gudalkop	2.50%	पूरेसा	95.00%	कमतरता	0.00%	पूरेसा	0.00%	पूरेसा	14.29%	पूरेसा	31.93%	पूरेसा
कोल्हापूर	गडहिंगलज	Hedige	19.83%	पूरेसा	13.79%	पूरेसा	1.72%	पूरेसा	0.00%	पूरेसा	10.00%	पूरेसा	30.00%	पूरेसा
कोल्हापूर	गडहिंगलज	Haikarni	48.72%	कमतरता	1.28%	पूरेसा	0.00%	पूरेसा	0.00%	पूरेसा	19.83%	पूरेसा	15.79%	पूरेसा
कोल्हापूर	गडहिंगलज	Haninnal	1.19%	पूरेसा	0.00%	पूरेसा	0.00%	पूरेसा	0.00%	पूरेसा	51.28%	कमतरता	92.31%	कमतरता
कोल्हापूर	गडहिंगलज	Hanmantwadi	0.00%	पूरेसा	68.00%	कमतरता	0.00%	पूरेसा	0.00%	पूरेसा	15.48%	पूरेसा	53.57%	कमतरता
कोल्हापूर	गडहिंगलज	Harli Bk	1.22%	पूरेसा	0.00%	पूरेसा	0.00%	पूरेसा	0.00%	पूरेसा	16.00%	पूरेसा	48.00%	कमतरता
कोल्हापूर	गडहिंगलज	Harli Kh	10.64%	पूरेसा	0.00%	पूरेसा	0.00%	पूरेसा	0.00%	पूरेसा	10.98%	पूरेसा	21.95%	पूरेसा
कोल्हापूर	गडहिंगलज	Hasurchempu	0.95%	पूरेसा	0.00%	पूरेसा	0.00%	पूरेसा	0.00%	पूरेसा	51.06%	कमतरता	87.23%	कमतरता
कोल्हापूर	गडहिंगलज	Hasursasgiri	87.50%	कमतरता	0.00%	पूरेसा	0.00%	पूरेसा	0.00%	पूरेसा	1.90%	पूरेसा	7.62%	पूरेसा
कोल्हापूर	गडहिंगलज	Hasurwadi	5.71%	पूरेसा	22.86%	पूरेसा	0.00%	पूरेसा	0.00%	पूरेसा	72.50%	कमतरता	55.00%	कमतरता
कोल्हापूर	गडहिंगलज	Hebbal Jaideyal	1.82%	पूरेसा	52.73%	कमतरता	0.00%	पूरेसा	0.00%	पूरेसा	0.00%	पूरेसा	68.57%	कमतरता
कोल्हापूर	गडहिंगलज													

जिल्हा मृद सर्वेक्षण व मृद चाचणी अधिकारी
मृद सर्वेक्षण व मृद चाचणी प्रयोगशाळा
कोल्हापूर.

Annexure - III

Government of Maharashtra

38

Assistant Commissioner of Fisheries (Technical), Kolhapur Office
Dhanya Godown Road, Ramanmala, Kolhapur.

Out. No. ACFKOP/Technical/1449/2022

Date : 03.06.2022

To,
The Regional Officer,
Maharashtra Pollution Control Board,
Kolhapur.

Sub. :- Compliance as per order dated 18th April, 2022 of Hon'ble National Green Tribunal (NGT), Principal Bench, New Delhi in Original Application No. 180/2022 Shahu Shivaji Mokashi vs. State of Maharashtra & others

Ref. :- 1. Your letter No. MPCB/ROK/571/22 dtd. 24.05.2022.
2. Letter of Office of Assistant Commissioner of Fisheries (Technical) No. ACFKOP/Technical/1375/2022 dtd. 25.05.2022.
3. Your letter No. MPCB/RO/KOP/220602/FTS-0053 dtd. 02.06.2022.

Sir,

With reference to above subject letter submitting that visit on 06.06.2022 morning 11.00 am to M/s. Hiranyakeshi Sahakari Sakhar Karkhana, Sankeshwar-Hukkeri, Belgaum & surrounding area as well as to aware the last five years factual analysis / reports.

In connection to this case & as per the documents available with this office for year 2016-17 to year 2022-23 (till date) no any complaint or statement is available with this office regarding Hiranyakeshi River Pollution.

Also this office did not have any norms & standards regarding pollution as it is related to Pollution Department. Please you well known about it.

In the present case as per your department guidelines & actual facts / test of Polluted Water Sample recommending for further necessary action.

This is for necessary action.

Sd/-

Assistant Commissioner of Fisheries (Technical)
Kolhapur

Copy for information to -

1. The Commissioner Fishery Department, Government of Maharashtra, Mumbai
2. The District Collector and District Magistrate Kolhapur
3. Regional Deputy Commissioner Fishery, Pune Division, Pune.

Copy for necessary action -

Assistant Fisheries Officer, Assistant Officer Fishery (Technical) Office, Kolhapur.

महाराष्ट्र शासन

39

सहायक आभुक्त मत्स्य व्यवसाय (तां.) कोल्हापूर कार्यालय
धान्य गीडाकून रोड, रमणमळा, कोल्हापूर

जा. क्र. स्वआमको/तां./1449/2022

दि. 03/06/2022

प्राति,

मा. प्रादेशिक अधिकारी,
महाराष्ट्र प्रदुसन नियंत्रण मंडळ,
कोल्हापूर.

विषय:- श्री. शाह शिवाजी मोकाशी यांनी महाराष्ट्र राज्य आणि
इतर यांच्या विरुद्ध दाखल केलेल्या मुळ प्रज 960/2022
मध्ये मा. राष्ट्रीय हरित लवण, पश्चिम विभाग, पुणे यांनी
तथ्यात्मक तपासणी आणि कार्यवाहीबाबत दि. 96/08/2022
रोजी दिलेल्या आदेशाचे पालन करणेबाबत..

संदर्भ:- 1) आपले पत्र जा.क्र. म प्रनिमं/प्राकाको/969/2022,
दि. 28/09/2022

2) सहायक आभुक्त मत्स्य व्यवसाय (तां.) कोल्हापूर कार्यालय
चे पत्र जा.क्र. स्वआमको/तां./1375/2022 दि. 25/05/2022

3) आपले पत्र NO. MPCB/RO/KOP/220602/FIS-
0053, दि. 02/06/2022,

मनोदय,

उपरोक्त विषयाचे संदर्भातील पत्रांचे अनुसंगाने स्वतंत्रपणे विहित
करण्यात येते कि, दि. 06/06/2022 रोजी स. 11:00 वा. हिरण्यकेशी
सहकारी साखर कारखाना, शांखेश्वर- हळकेरी, वेळगाव परिसरातील
हिरण्यकेशी नदीभागात भेटीबाबत तसेच त्यानुसंगाने मागिल
पुर्वजातील तथ्यात्मक तपासणी/कार्यवाही अहवालाबाबत अवगत

REGIONAL OFFICE
P.C. BHAVAN
DOOR NEAR COLLECTOR OFFICE
416-006

प्रकरण प्रकटणी या कार्यालयाचे उपलब्ध असिलेक्यानुसार
2026-27 ते सन 2022-23 (आजमितीपर्यंत) या कालावधीत
हिरण्यकेशी नदीप्रदुसणा बाबतीत कोणतीही तक्रार/निवेदन या
कार्यालयाचे अपिलेखी उपलब्ध नाही.

तसेच प्रकृशाखाबाबतचे शास्त्रीय मानक (Norms & Standard procedure) या कार्यालयाचे अभिलेखी उपलब्ध नाहीत; वस्तुतः प्रकृशाखा विशाखाची खंडांची आहेत. कृषा विधीन होते.

प्रकृशाखा प्रकृशाखा आपले विशाखाचे मार्गदर्शन तथा स्वयंसेवी परामर्श वस्तुतः / प्रात्यक्षिके, प्रकृशाखा पाळाचे नमुने इत्यादी खंडांचा फुडिल उचित कार्यवाही प्रकृशाखा आहे.

कृषा उचित कार्यवाही.

रुईनाकरवडी

सहाय्यक आयुक्त मत्स्यव्यवसाय (तां)
कोल्हापूर

प्रत माहितीतक रविमधु असेधित;

- 1) मा. आयुक्त मत्स्यव्यवसाय, महाराष्ट्र राज्य, मुंबई.
- 2) मा. जिल्हाधिकारी तथा जिल्हादेडाधिकारी, कोल्हापूर
- 3) मा. प्रादेशिक उपायुक्त मत्स्यव्यवसाय, पुणे विभाग, पुणे.

प्रत कार्यवाहीतक;

र. म. वि. अ., र. आ. म. (तां) कार्यालय, कोल्हापूर.

REGIONAL OFFICE
P. C. BOARD
KOG BHAVAN
NEAR COLLECTOR OFFICE
KOLHAPUR - 416 003

Email

Consultant Judicial-NGT(P.B.)

Notarized Reply Affidavit in the matter of NGT OA No. 180 of 2022 Shahu Shivaji Mokashi Vs State of Maharashtra & Others

From : rokolhapur@mpcb.gov.in
Subject : Notarized Reply Affidavit in the matter of NGT OA No. 180 of 2022 Shahu Shivaji Mokashi Vs State of Maharashtra & Others
To : Consultant Judicial-NGT(P.B.) <judicial-ngt@gov.in>
Cc : lo1@mpcb.gov.in, mvermadv@gmail.com

Tue, Sep 27, 2022 07:13 PM

 1 attachment

Sir,
Please find attached herewith Notarized Reply Affidavit in the matter of NGT OA No. 180 of 2022 Shahu Shivaji Mokashi Vs State of Maharashtra & Others.

Regards,

J. S. Salunkhe

REGIONAL OFFICER,

MAHARASHTRA POLLUTION CONTROL BOARD, KOLHAPUR

 **Notarized Reply Affidavit NGT OA No. 180 of 2022.pdf**
3 MB
